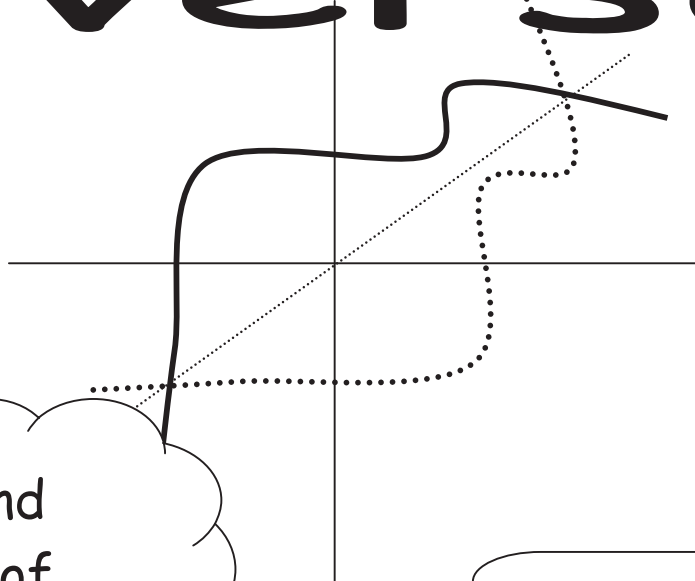


Inverses



How do I find the inverse of a function?

EXAMPLE
 $f(x) = 3x^2 - 8$

Switch to the $y =$ notation from the $f(x) =$.

Exchange x and y in the problem and solve for y .

Rewrite as $f^{-1}(x) =$.

[Empty box for the first step]

[Empty box for the second step]

[Empty box for the third step]

Graphic Organizer by Dale Graham and Linda Meyer
Thomas County Central High School; Thomasville GA